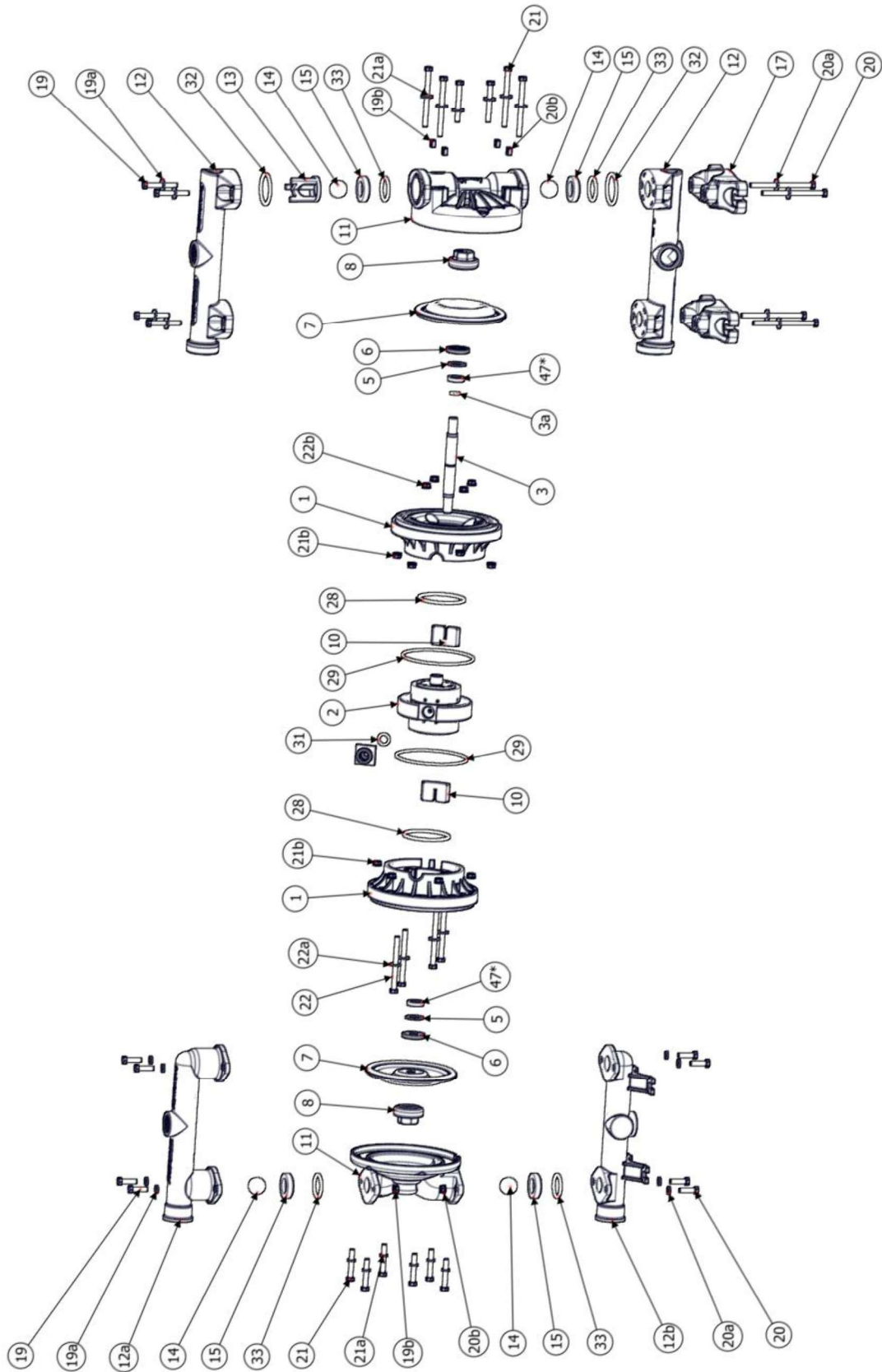


3.8 PART LIST & RECOMMENDED SPARE PARTS: DDE 060 – 100 – 160

WR_ - FC_ - AL_

SS_ - SP_



LEGEND: DDE 060 – 100 – 160

Pos.	Part name	Q.ty.	recommended spare parts	
			start up	2 years
1	Center Block (Half Part)	2		
2	Pneumatic Exchanger	1		
3	Shaft	1		
3a	Shaft O-Ring	1		
5	Belleville Washer	2		
6	Cap (Air Side)	2		
7	Diaphragm* <i>* Configurations "y" and "L" respectively provide coupled diaphragm: TPE + PTFE / TPV + PTFE</i>	2		
8	Cap (Fluid Side)	2		
10	Exhaust Silencer	2		
11	Fluid Chamber	2		
12	Manifold (version WR_ - FC_ - AL_)	2		
12a	Discharge Manifold (version SS_ - FDA SP_)	1		
12b	Suction Manifold (version SS_ - FDA SP_)	1		
13	Ball Runner Cage (version WR_ - FC_ - AL_)	2		
14	Ball	4		
15	Ball Seat	4		
17	Foot (version WR_ - FC_ - AL_)	2		
19	Manifold Connection: Discharge Side/ Fluid Chamber	4		
19a	Washers (Discharge Manifold/ Fluid Chamber)	4		
19b	Nuts (Discharge Manifold/ Fluid Chamber)	4		
20	Manifold Connection: Suction Side/ Fluid Chamber	4		
20a	Washers (Suction Manifold/ Fluid Chamber)	4		
20b	Nuts (Suction Manifold/ Fluid Chamber)	4		
21	Connection: Fluid Chamber/ Center Block (Half Part)	MOD. 60/100: n°. 6+6 MOD. 160: n°. 8+8		
21a	Washers (Fluid Chamber/ Center Block (Half Part))	MOD. 60/100: n°. 6+6 MOD. 160: n°. 8+8		
21b	Nuts (Fluid Chamber/ Center Block (Half Part))	MOD. 60/100: no. 6+6 MOD. 160: n°. 8+8		
22	Connection: Center Block	4		
22a	Washers Center Block	4		
22b	Nuts Center Block	4		
28	O-Ring	2		
29	O-Ring	2		
31	O-Ring	1		
32	O-Ring Upper (version WR_ - FC_ - AL_)	4		
33	O-Ring Lower	4		
47*	Stroke Spacer	2		
51	Air Connection	1		
SPARE PARTES				
K1	Pneumatic Exchanger		1	1
K3	Wet End Kit		1	1
* Note: the spacers pos. 47 may be not installed				